



DATA DELIVERY

A Division of OEM Controls, Inc.



CAPTURE SOLUTIONS

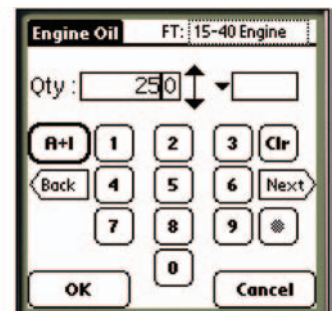
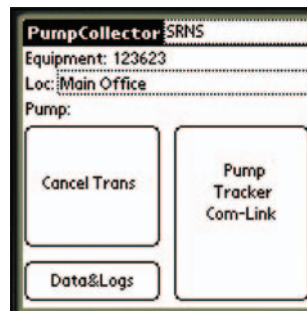
This is the ultimate “un-PC” – for construction and other jobsite applications. It's simple, user-friendly, and engineered for end users, rather than computer-users.

Operators have limited time, so we put large buttons on the PDA to speed the process, one simple question per prompt, and one direction to proceed. Five quick questions, and easy answer and flow screens.



Fuel and Consumables

Our Service Tracker and Pump Tracker streamline the jobs of fuel and lube truck operators.



OEMDD: the digital bridge that delivers timely, accurate jobsite data, so you can optimize every resource, and maximize profitability

CAPTURE SOLUTIONS

Service and Repair

Mechanics and PM technicians track their activities, hours and progress.

Repair & Service Record
Equip: 56464 Excavator
Type: Repair/Service
Reason: E2000 Drive Train
Soltn: Installed
Cancel Comments
Done Next Task

ServiceAlert 12/9/2005 12:42
Periodic Service #3
Service Complete
Service Later

Task

Operators track their activities, hours, equipment usage and progress.

Task Record Loc: Charlotte
Equip: 123 TRACTOR
Type: Setup
Task: Wait Lot From Test
Cancel Comments
Done Next Task

Fleet Inspections

Daily, monthly and annual inspections, from tires and tracks to OSHA inspections. System streamlines communication with mechanics regarding non-conforming items.

Pre-Trip Daily Equipment Inspect
Equip# 123
9.Hydraulic System-Cyl/Pumps/Motors/H
OK N-C
N/A
Action+Info

Asset Tracking Software Module

OEM DD program for PDAs tracks data on hours, location, destination and movement type for a particular asset. A powerful fleet management software tool for construction project management and many other applications.

Asset User: Peter
5/26/2004 14:02
Machine: Excavator S/N: 123623
Leaving Receiving Inventory Disposal
Loc: Trumbull Bridge
To: Fairfield High
Via: Route 8
Hours: 3128.0 Miles: 0.0
OK CANCEL

Miles
Machine: S/N : 123
Miles : 5.0
1 2 3 Clr
4 5 6
7 8 9 #
OK 0 Cancel



A Division of OEM Controls, Inc.